

1

ROUND BOXES

ROUND TELESCOPIC SLEEVE adjustable in length by turning



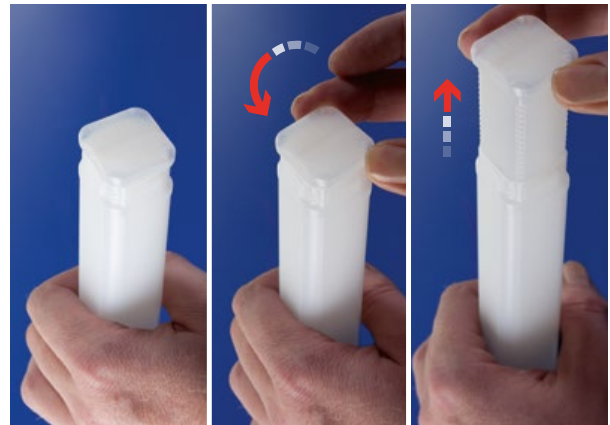
Art. No. RBH Ø		length (mm)	
RUH 10/50-70	RUH 16/120-200	RUH 35/80-120	RUH 65/200-350
RUH 10/80-120	RUH 16/200-350	RUH 35/120-200	RUH 85/80-100
RUH 10/120-200	RUH 16/350-620	RUH 35/200-350	RUH 85/120-180
RUH 13/50-70	RUH 22/50-60	RUH 45/80-120	RUH 85/200-350
RUH 13/80-120	RUH 22/80-120	RUH 45/120-200	RUH 85/350-550
RUH 13/120-200	RUH 22/120-200	RUH 45/200-350	RUH 105/80-100
RUH 13/200-350	RUH 22/200-350	RUH 55/120-200	RUH 105/120-180
RUH 16/80-120	RUH 22/350-620	RUH 65/120-200	RUH 105/200-350

ROUND-TELESCOPIC SLEEVE adjustable in length by turning



Art. No. RBH Ø		length (mm)	
TH 28/50-60	TH 35/120-200	TH 50/80-120	TH 65/120-200
TH 28/80-120	TH 35/200-350	TH 50/120-200	TH 65/200-350
TH 28/120-200	TH 35/350-620	TH 50/200-350	TH 80/80-100
TH 28/200-350	TH 40/50-60	TH 50/350-620	TH 80/120-180
TH 30/50-60	TH 40/60-80	TH 55/50-60	TH 80/200-350
TH 30/80-120	TH 40/120-200	TH 55/60-80	TH 80/350-550
TH 30/120-200	TH 45/50-60	TH 55/80-120	TH 80/550-1000
TH 30/200-350	TH 45/60-80	TH 55/120-200	TH 105/80-100
TH 30/350-620	TH 45/80-120	TH 55/200-350	TH 105/120-180
TH 30/410-770	TH 45/120-200	TH 55/350-620	TH 105/200-350
TH 35/50-60	TH 45/350-620	TH 65/50-60	
TH 35/60-80	TH 50/50-60	TH 65/60-80	
TH 35/80-120	TH 50/60-80	TH 65/80-120	

RECTANGULAR BLOCK PACK SLEEVES adjustable in length by turning and pulling



Art. No. RBH Ø		length (mm)	
RBH 14/50-80	RBH 18/200-350	RBH 24/120-200	RBH 75/120-200
RBH 14/80-120	RBH 20/50-80	RBH 24/200-350	RBH 75/200-350
RBH 14/120-200	RBH 20/80-120	RBH 26/50-70	RBH 85/120-200
RBH 14/200-350	RBH 20/120-200	RBH 26/80-120	RBH 85/200-350
RBH 16/50-80	RBH 20/200-350	RBH 26/120-200	RBH 85/350-620
RBH 16/80-120	RBH 22/50-80	RBH 26/200-350	RBH 95/120-200
RBH 16/120-200	RBH 22/80-120	RBH 65/80-120	RBH 95/200-350
RBH 16/200-350	RBH 22/120-200	RBH 65/120-200	RBH 95/350-620
RBH 18/50-80	RBH 22/200-350	RBH 65/200-350	
RBH 18/80-120	RBH 24/50-80	RBH 65/350-620	
RBH 18/120-200	RBH 24/80-120	RBH 75/80-120	