

BALL HINGED BOXES

Each Box with **2 colour applications: Please advice whilst ordering!**

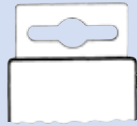
Possibility 1: Bottom black + Lid crystal clear, **Possibility 2:** Bottom + Lid crystal clear



Design



KL Ball hinge alongside



W Wall attachment



KB Ball hinge broadside

Length x Width x Height	Art. No.	HU in mm HU = Height bottom part	Design
27 x 27 x 8	V 5-1	4	KL
27 x 27 x 11	V 5-2	7	KL
27 x 27 x 13	V 5-3	6,5	KL
27 x 27 x 17	V 5-4	13	KL
27 x 27 x 20	V 5-5	13	KL
27 x 27 x 26	V 5-6	13	KL
35 x 30 x 16	V 5-7	8	KB
35 x 30 x 22	V 5-8	14	KB
35 x 30 x 28	V 5-9	14	KB
40 x 39 x 33	V5-139	12	KL
41 x 41 x 28	V 5-10	14	KL
41 x 41 x 17	V 5-90	14	KL
41 x 41 x 24	V 5-91	14	KL
43 x 43 x 6	V 5-92	3	KL
43 x 43 x 13	V 5-93	10	KL
43 x 43 x 20	V 5-94	10	KL
48 x 29 x 16	V 5-11	8	KB
48 x 29 x 21	V 5-12	13	KB
48 x 29 x 26	V 5-13	13	KB
50 x 50 x 12	V 5-111	6	KB
50 x 50 x 20	V 5-112	14	KB
50 x 50 x 28	V 5-113	14	KB
50 x 50 x 31	V 5-114	25	KB
50 x 50 x 39	V 5-115	25	KB
50 x 50 x 50	V 5-116	25	KB
55 x 38 x 10	V 5-14 (W)	5	KL (W)
55 x 38 x 14	V 5-15	7	KB
55 x 38 x 18	V 5-16 (W)	13	KL (W)
55 x 38 x 26	V 5-17	13	KL
60 x 25 x 11	V 5-18	5,5	KB
65 x 65 x 6	V 5-95	3	KL
65 x 65 x 10	V 5-96	7	KL
65 x 65 x 14	V 5-19	7	KL
65 x 65 x 16	V 5-97	13	KL
65 x 65 x 20	V 5-20	13	KL
65 x 65 x 26	V 5-21	13	KL
67 x 16 x 8	V 5-22	4	KL
70 x 45 x 12	V 5-142	6	KL
70 x 45 x 14	V 5-23	7	KB

Length x Width x Height	Art. No.	HU in mm HU = Height bottom part	Design
70 x 45 x 19	V 5-132	13	KL
70 x 45 x 24	V 5-140	12	KL
70 x 45 x 26	V 5-143	13	KL
74 x 74 x 13	V 5-24	6,5	KL
74 x 74 x 26	V 5-25	19,5	KL
74 x 74 x 39	V 5-26	19,5	KL
77 x 55 x 12	V 5-27 (W)	6	KL (W)
77 x 55 x 19	V 5-28 (W)	13	KL (W)
77 x 55 x 26	V 5-29	13	KL
78 x 30 x 10	V 5-51	5	KL
78 x 30 x 18	V 5-52	13	KL
78 x 30 x 26	V 5-53	13	KL
86 x 54 x 5	V 5-105	2,5	KL
86 x 54 x 24	V 5-106	21,5	KL
86 x 54 x 35	V 5-107	32,5	KL
86 x 54 x 44	V 5-108	22	KL
86 x 54 x 55	V 5-109	32,5	KL
86 x 54 x 66	V 5-110	32,5	KL
95 x 95 x 14	V 5-57	7	KL
95 x 95 x 29	V 5-121	22	KL
95 x 95 x 44	V 5-122	22	KL
100 x 60 x 12	V 5-58	6	KB
104 x 74 x 12	V 5-45	6	KL
104 x 74 x 22	V 5-46	16	KL
104 x 74 x 32	V 5-47	16	KL
111 x 52 x 12	V 5-117	6	KL
111 x 52 x 21	V 5-118	15	KL
111 x 52 x 30	V 5-119	15	KL
117 x 90 x 8	V 5-30	4	KL
117 x 90 x 21	V 5-31	17	KL
117 x 90 x 34	V 5-32	17	KL
117 x 90 x 49	V 5-145	45	KL
120 x 40 x 12	V 5-48	6	KL
120 x 40 x 16	V 5-49	10	KL
120 x 40 x 20	V 5-50	10	KL
121 x 121 x 3	V 5-120	1,5	KB
121 x 121 x 8,5	V 5-123	7	KB
121 x 121 x 14	V 5-124	7	KB
121 x 121 x 23,5	V 5-125	22	KB

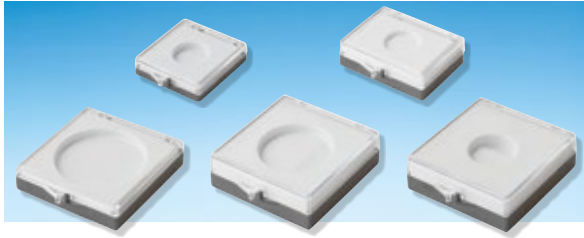
Length x Width x Height	Art. No.	HU in mm HU = Height bottom part	Design
121 x 121 x 29,5	V 5-126	22	KB
121 x 121 x 44	V 5-127	22	KB
130 x 32 x 14	V 5-33	7	KL
130 x 65 x 14	V 5-128	7	KB
130 x 65 x 29	V 5-129	22	KB
130 x 65 x 44	V 5-130	22	KB
138 x 44 x 14	V 5-34	7	KL
138 x 44 x 21	V 5-35	14	KL
138 x 44 x 28	V 5-144	14	KL
140 x 90 x 17	V 5-36	8,5	KL
141 x 44 x 14	V 5-37	7	KL
160 x 74 x 10	V 5-98	5	KL
160 x 74 x 25	V 5-99	20	KL
160 x 74 x 40	V 5-100	20	KL
160 x 111 x 10	V 5-101	5	KL
160 x 111 x 25	V 5-102	20	KL
160 x 111 x 40	V 5-103	20	KL
170 x 42 x 18	V 5-38	9	KL
170 x 160 x 10	V 5-54	5	KL
170 x 160 x 25	V 5-55	20	KL
170 x 160 x 40	V 5-56	20	KL
193 x 26 x 9	V 5-39	4,5	KL
196 x 90 x 17	V 5-40	8,5	KL
200 x 150 x 3	V 5-151	1,5	KL
200 x 150 x 20	V 5-152	18,5	KL
200 x 150 x 37	V 5-153	18,5	KL
210 x 100 x 24	V 5-41	12	KL
213 x 22 x 16	V 5-42	8	KL
214 x 23 x 12	V 5-149	8	KL
228 x 42 x 18	V 5-44	9	KL
230 x 60 x 16	V 5-133	8	KL
230 x 60 x 24	V 5-135	16	KL
230 x 60 x 36	V 5-134	16	KL
248 x 42 x 13	V 5-141	6,5	KL

Usable inside dimensions in mm.

Dimensions subject to errors and corrections!

RECTANGULAR BOXES

INSERTS FOR BALL HINGED BOXES WITH ROUND COMPARTMENTS (boxes see page 13)



Dimensions	Art. No.	Suited for box
Ø 20 x 2	2445660	V 5-15
Ø 20 x 3,5	2445664	V 5-92
Ø 26 x 3,5	2445665	V 5-92
Ø 26 x 4,5	2445667	V 5-19
Ø 31 x 3,5	2445666	V 5-92
Ø 36 x 4	2445661	V 5-95

Dimensions	Art. No.	Suited for box
Ø 36 x 4,5	2445668	V 5-19
Ø 41 x 4	2445662	V 5-95
Ø 45 x 3	2445670	V 5-19
Ø 50 x 4	2445663	V 5-95
Ø 50 x 5	2445659	V 5-24
Ø 80 x 10	2445658	V 5-57

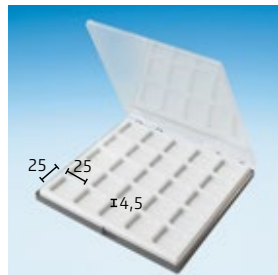
INSERTS FOR BALL HINGED BOXES WITH RECTANGULAR COMPARTMENTS (boxes see page 13)



Art. No. **2423210**

Suited for box **V 5-36**

4 compartments



Art. No. **2445654**

Suited for box **V 5-54**

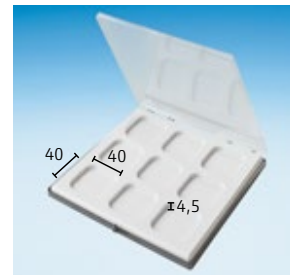
25 compartments



Art. No. **2445653**

Suited for box **V 5-54**

16 compartments



Art. No. **2445652**

Suited for box **V 5-54**

9 compartments



Art. No. **2445655**

Suited for box **V 5-55**

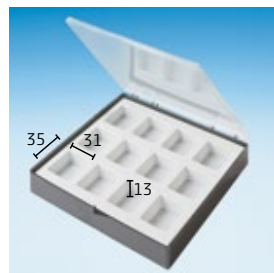
6 compartments



Art. No. **2445656**

Suited for box **V 5-55**

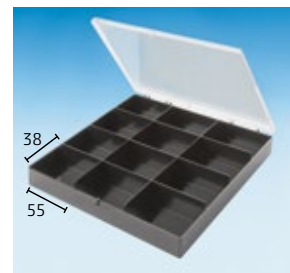
6 compartments



Art. No. **2445657**

Suited for box **V 5-55**

12 compartments



Art. No. **V30-28**

Dimensions 170 x 160 x 25 mm

12 compartments each 55 x 38 mm

BALL HINGED BOXES WITH FIXED COMPARTMENTS



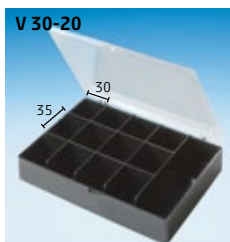
Overall dimensions

98 x 93 x 33 mm



Overall dimensions

163 x 120 x 29 mm



Overall dimensions

163 x 120 x 29 mm

DENTAL-BRACKET-BOX



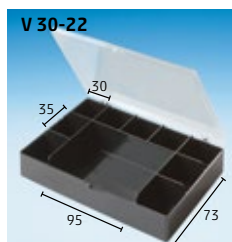
Dimensions 117 x 90 x 8 mm

20 round compartments, Ø 13 x 10 (5 mm deep)



Overall dimensions

163 x 120 x 29 mm



Overall dimensions

163 x 120 x 29 mm



Outside dimensions

117 x 90 x 18 mm

SMD-ASSORTMENT-BOX



Dimensions Box V5-27: 77 x 55 x 12 mm

35 round compartments, Ø 7 x 6 mm



Dimensions Box V5-27: 77 x 55 x 12 mm

35 round compartments, Ø 7 x 6 mm